

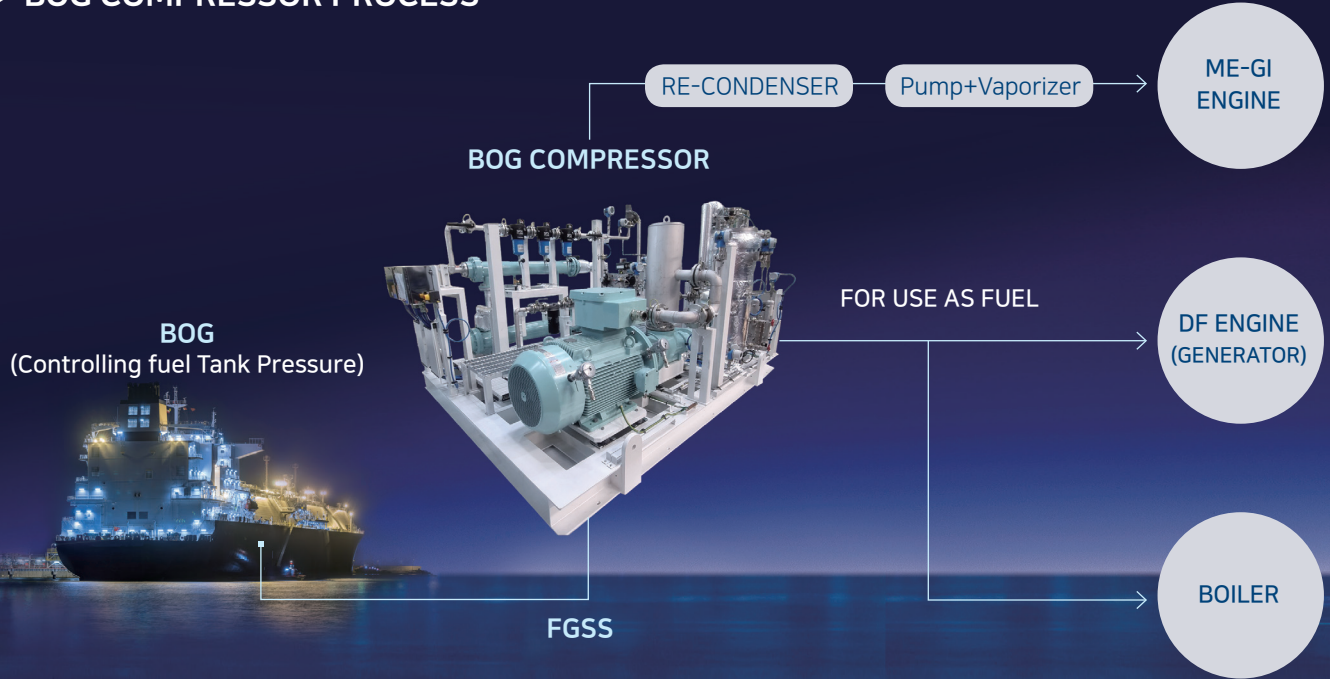
# GAS COMPRESSOR

---



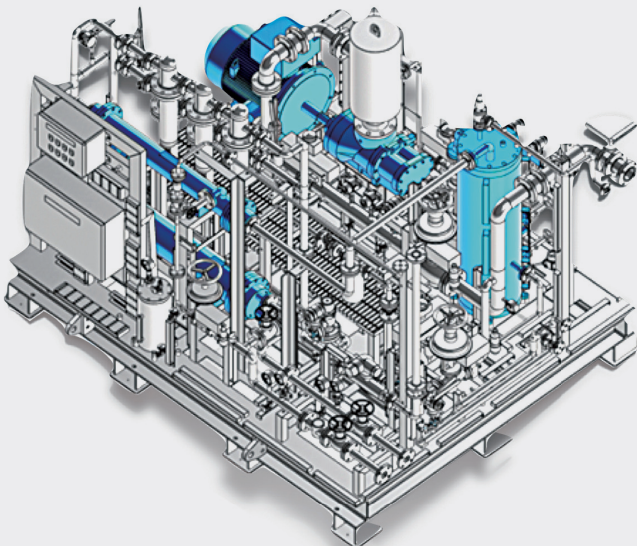
# BOG COMPRESSOR

## ► BOG COMPRESSOR PROCESS



- Low OPEX
- Low CAPEX
- Easy operation
- Extremely durable and robust
- Unique and broad range of applications

### • OIL INJECTED SCREW TYPE



## ► BOG COMPRESSOR SPEC

TYPE	Oil injected screw type
APPLICABLE FLUID	CH <sub>4</sub> , NH <sub>3</sub> , CO <sub>2</sub> , PROPYLENE
CAPACITY	Max. 10,000 kg/h
SUCTION PRESSURE	In accordance with customer requirements
SUCTION TEMPERATURE	-40°C ~ +50°C
DISCHARGE PRESSURE	Max. 52 bar G (Contact us separately for 20 bar A and above)

\* Please contact us separately for Oil Free.



# SCOPE OF SUPPLY

## ▶ OIL FILTERING SYSTEM FOR OIL INJECTED TYPE



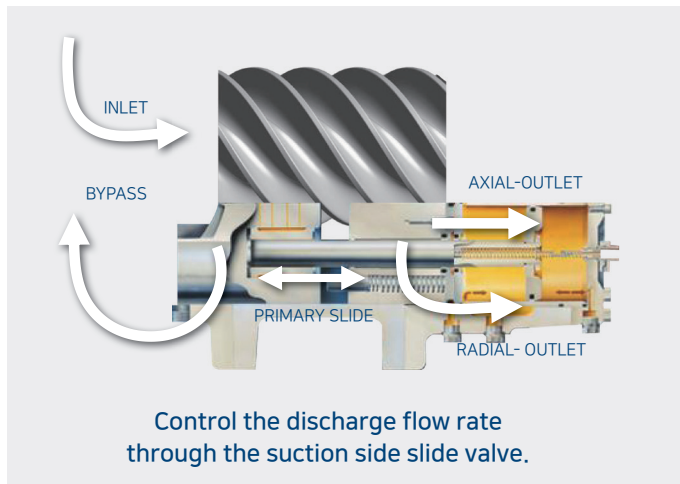
## ▶ INSTRUMENTATION & CONTROLS

**CONTROL PANEL**      **HMI**      **ALARM & TRIP SYSTEM**

\* Manufacture in compliance with IGF CODE 15, Control, Monitoring & Safety systems.

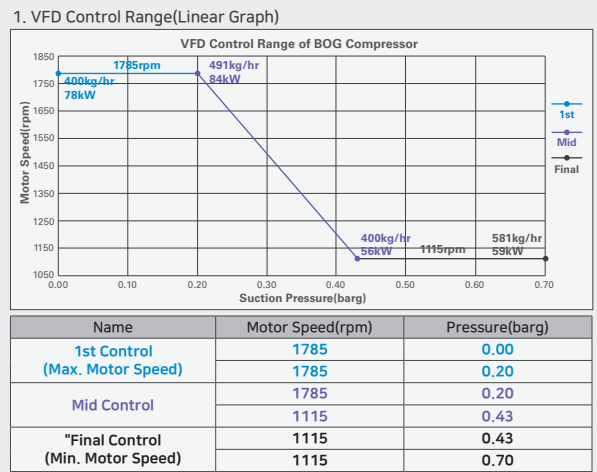
## ▶ CAPACITY CONTROL METHOD

### • SLIDE VALVE



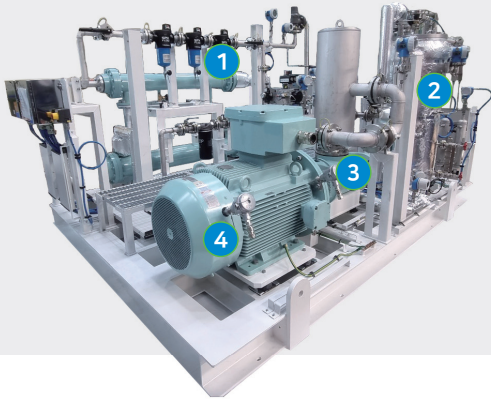
• SLIDE VALVE + RECYCLE VALVE : SLIDE VALVE(10 ~ 100%), RECYCLE VALVE(0~10%)

### • VFD



• VFD + RECYCLE VALVE : VFD(50 ~ 100%), RECYCLE VALVE(0~50%)

▶ MAIN EQUIPMENTS



- ① GAS FILTER
- ② OIL SEPARATOR
- ③ GAS END  
(Oil Free / Oil Injected)

- ④ ELECTRIC MOTOR
  - Three-phase motors that conform to IEC
  - 440V, 3Ph, 60Hz
  - Efficiency Class : IE2
  - IP Class : IP55
  - IEC Class : IEC411 Self ventilated
  - Mounting Type : B35
  - Ex-Proof type : Ex d IIB T4

## BOG REFERENCE LIST

STATUS	Q'TY(SETS)
Under operation after ship delivery	141
Delivered to Shipyard	60
Under fabrication	186
Grand TOTAL	387



\* Based on November 30, 2023

CONTAINER SHIP



CRUDE OIL TANKER



FSRU



VEHICLES CARRIER



BULK CARRIER





# ADDITIONAL ITEM

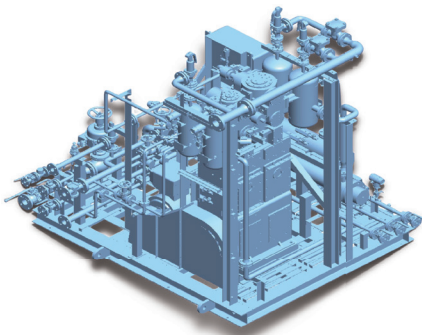
## ▶ OIL FREE SCREW COMPRESSOR



TYPE	Oil Free screw type
APPLICABLE FLUID	CH <sub>4</sub> , N <sub>2</sub> , CO <sub>2</sub> , NH <sub>3</sub>
SUCTION TEMPERATURE	-20°C ~ +50°C
CAPACITY	~ 9,300 m <sup>3</sup> /h
DISCHARGE PRESSURE	Max. 10.5 bar G

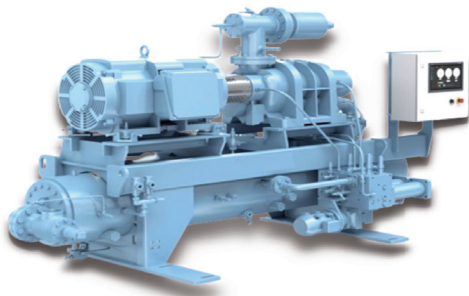
\* The above specifications are basic specifications, and please contact us separately for the Oil Free type.

## ▶ OIL FREE RECIPROCATING COMPRESSOR



TYPE	Oil Free Reciprocating type
APPLICABLE FLUID	NH <sub>3</sub> , LPG, CO <sub>2</sub> , N <sub>2</sub> , CH
SUCTION TEMPERATURE	-20°C ~ +50°C
CAPACITY	~ 200 Nm <sup>3</sup> /h
DISCHARGE PRESSURE	Max. 40 bar G

## ▶ REFRIGERANT COMPRESSOR

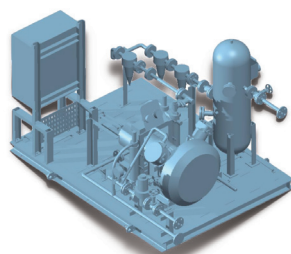
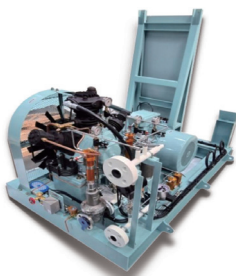


TYPE	Oil Free Screw type
APPLICABLE FLUID	NH <sub>3</sub> , LPG, CO <sub>2</sub> , N <sub>2</sub> , CH <sub>4</sub>
SUCTION TEMPERATURE	-60°C ~ +120°C
CAPACITY	~13,000 m <sup>3</sup> /h
DISCHARGE PRESSURE	Max. 28 bar G

## ▶ N<sub>2</sub> BOOSTING COMPRESSOR

HIGH PRESSURE

LOW PRESSURE



TYPE	Oil Injected Reciprocating
APPLICABLE FLUID	Air, N <sub>2</sub>
SUCTION TEMPERATURE	+10°C ~ +50°C
CAPACITY	HIGH PRESSURE : ~16 m <sup>3</sup> /h LOW PRESSURE : ~20 m <sup>3</sup> /h
DISCHARGE PRESSURE	Max. 40 bar G

## **DongHwa Pneutec**



### **DongHwa Pneutec Co., Ltd.**

75, Mieumsandan-ro, 8beon-gil, Gangseo-gu, Busan, Korea  
T. +82-51-974-4800 / F. +82-51-974-4896

## **GROUP COMPANY**

### **DongHwa Entec Noksan Office and Factory**

7, Noksansandan 261-ro, Gangseo-gu, Busan, 46753, South Korea  
TEL : +82-51-970-1000 FAX : +82-51-970-1001

### **DongHwa Entec Hwajeon Office and Factory**

63-gil, Hwajeonsandan 1-ro, Gangseo-gu, Busan, 46740, South Korea  
TEL : +82-51-970-1100 FAX : +82-51-970-1105

### **DongHwa Entec Energy·Environmental Technology Laboratory**

7, Gwahaksandan-ro 305beon-gil, Gangseo-gu, Busan, 46742, South Korea  
TEL : +82-51-970-0711 FAX : +82-51-970-0730

### **DongHwa Entec (Jiangsu) Co., Ltd.**

Building 1, 888 Jinxiu Road, Tongzhou District,  
Nantong City, Jiangsu Province  
TEL : +86 -8659-6689

### **DongHwa Entec Industrial (shanghai) Co., Ltd.**

Room 404, Building No. B4, Lane 9 North Yunjuan Road,  
Lingang District, Shanghai, China 201306  
TEL : +86 (0)21-5197-5001 FAX : +86 (0)21-5197-5005

### **GAS Entec**

#2701~2707, KNN Tower, 30, Centum Seo-ro, Woo-dong, Haeundae-gu,  
Busan, 48058, South Korea  
TEL : +82-51-714-3308 FAX : +82-70-7500-3979